

REGISTRATION DETAILS

Please include full payment with registration.

Online registration available at www.buv.com.au/women

Full Name _____

Postal Address _____

Phone _____

Email _____

Church _____

Please include me on the Victorian Baptist Women's mailing list for future events

Please include me on the Churches of Christ Vic / Tas mailing list for future events

Workshops (choose 1 from each stream)

STREAM 1

- 'Gift to Lead' - Karen Wilson
- 'Intimacy with God' - Kim Maitke
- 'Growing Teams' - Sandi Jones
- 'The Significant Woman' - Diann Feldman

STREAM 2

- 'Balance in Leadership' - Karen Wilson
- 'Ministry to Children' - Lisa Jenkins
- 'Coaching to GROW others' - Janet Woodlock
- 'Servant Leadership' - Diann Feldman

Cost: \$70 pp both Friday and Saturday
*DISCOUNT \$60pp group booking x 5 or more
\$30pp Friday only \$55pp Saturday only

Registration received on full payment.

No refunds on cancellations, transfers acceptable

Please find Cheque/Money Order made out to Baptist Union of Victoria

Please return this stub with payment to: Baptist Union of Victoria PO Box 377
Hawthorn 3122 | P: 9880 6122 | W: www.buv.com.au | E: vasti.vanwyk@bu.com.au

Embrace

Embracing all God has created you to be and do

A conference for all women in leadership and their teams

August 27th (7-9pm) – 28th (day) 2010

ONE Community Churches of Christ Blackburn

184 Surrey Road, Blackburn



Friday 27th August @ 7pm
Keynote **Helen Meyer** (Life-Keys)
'Embrace Community Mission'
Includes a beautiful supper and
interactive workshop



Saturday 28th August @ 9am - 4pm
Keynote **Nicole Connor** (City Life)
'Embrace God's Call on Leadership'



victorian
baptist women
nurture, network, equip



**Mission and
Ministry**

Churches of Christ
in Victoria and
Tasmania

Embrace is designed for Christian women leaders: experienced, beginning and emerging. Our theme for women is to “Embrace all God has created you to be and do.” We encourage you to bring your whole team to workshop the Friday night together and participate in the full range of Workshops on Saturday.

SATURDAY WORKSHOPS

(please select 1 workshop from each Stream)

STREAM 1



1. 'Embrace My Gift to Lead'

Karen Wilson (Willow Creek)

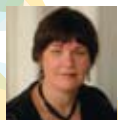
Develop your God-given leadership gifts in the company of other Christ-following women. You'll benefit from the teaching of an experienced leader who understands the unique challenges and opportunities women face while leading in the church. Network with other leaders as you sharpen your leadership gifts. Karen works full-time for the Willow Creek Association where she currently holds the position of Executive Director for the Global Leadership Summit in Australasia.



2. 'Embrace Intimacy with God'

Kim Miatke (Heathmont Baptist)

This elective will work through the biblical and very practical ways of knowing, loving, serving, and growing in God. Kim is a counsellor, wife, mother of three children and head of Hertime women's ministry at Heathmont Baptist Church. 10 years of journeying with people in the counseling room, 6 years ministering with Youth Dimension and 4 years of leading Hertime have given Kim a broad range of opportunities, challenges and perspectives that she loves to share.



3. 'Embrace Growing Teams'

Sandi Jones (Leading ConneXions & Arrow)

Sandy Jones is the Managing Director of Leading ConneXions, a role that involves consulting, training, coaching, and strategic reviews. This workshop will explore how to transition a committee or working group into a highly functional team. Her passion is to encourage, equip and empower leaders so that God's grace and Kingdom influence and impact is maximized in and through their lives and leadership.



4. 'Intro to The Significant Women'

Diann Feldman (Campus Crusade for Christ)

The 'Significant Woman' is an outstanding life coaching resource designed for local church ministry. It utilizes group and peer coaching to help women get in touch with what matters most to them, and to feel great about taking positive action. This elective will give you a "taster" that will equip you to facilitate and coach the 'Significant Woman' with a women's group.



STREAM 2

1. 'Embrace Balance in Leadership'

Karen Wilson (Australian Baptist Women)

One of the big issues for women is conflicting priorities and burnout. This elective will help you to clarify your priorities for healthy life and ministry. Karen has been the co-Senior Pastor of Whitford Church for 17 years, along with her husband Mark, and is currently the Western Australia Baptist Women's President.



2. 'Embrace Ministry to Children'

Lisa Jenkins (Kids Hope & Heathmont Baps)

This elective will equip you to input positively into the life of a child. Lisa is the Training & Development Associate for KIDS HOPE AUS., a primary school based mentoring program which sees a local church partner with their local school. Lisa's passionate about empowering women to live and love the life God called them to.



3. 'Embrace Coaching to GROW others'

Janet Woodlock (Churches of Christ)

Janet is the Coordinator of Women's Ministry Churches of Christ Unit Vic/Tas, and loves to coach other women to empower them in their life and ministry. This workshop is designed for people with some prior experience or training in coaching or mentoring. It will provide higher-level skills to make your coaching more intentional and effective.



4. 'Embrace Servant Leadership'

Diann Feldman (Feldman Associates)

Are you a servant-leader? Diann Feldman is the Chairperson for the Greenleaf Centre for Servant Leadership Aust/NZ and Managing Director of Feldman and Associates one of Australia's leading organizational development consultancies who expertise includes leadership development and career navigation. She says to ask yourself the question: "From their experience with you, having been served by you as their leader, has that in some way shaped, formed or helped them to become healthier, wiser, more free and more likely to do the same for others?"