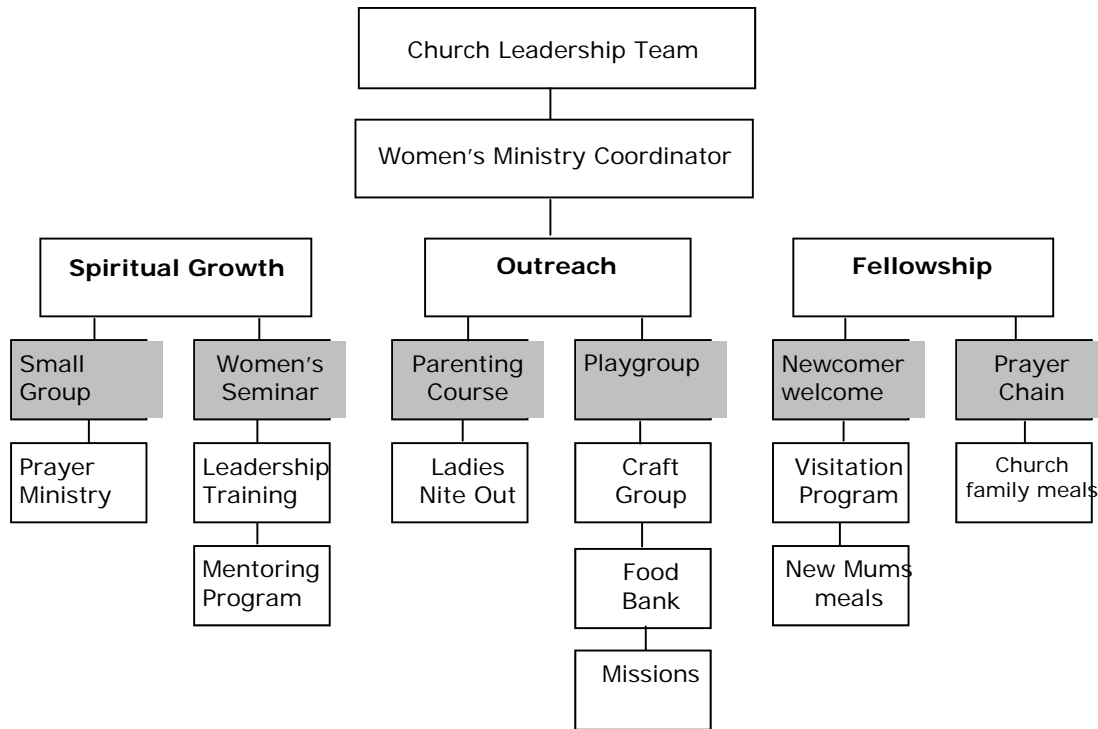




## ORGANIZING A WOMEN'S MINISTRY NETWORK

Using the results from your Women's Needs Survey you can begin to organize your women's ministry now and for the future. Start by arranging the ministries that you offer in your church and list them under one of the three headings – Spiritual Growth, Outreach or Fellowship. Add ministries your team would like to develop - dream big. This planner will help you organize your women's ministry.

### Women's Ministry example



Leaders will exist for the ministries that you already offer in your church, but with a plan you will begin to visualize where you need to train up new and future leaders as you work towards offering other ministries. The example above would represent a women's ministry that has been going for 10 years. If you are starting out, don't expect that you should offer these particular ministries or that you would offer so many ministries all at once. Work towards the ministries that your church is able to manage with the people that you have available. The highlighted boxes in the above example represent a smaller church Women's Ministry plan that could be between 1-3 years old. Remember people are more important than programs! Programs do not touch peoples lives, relationships do. Plan relationship ministries to reach people